

Facades available:

Callington, Harrogate, Kent	
Lancaster, Sheffield, Swansea	
Wiltshire	
Overall home width	11.50m
Overall home length	20.27m

Residence	144.4m ²	15.5sq
Garage	36.3m ²	3.9sq
Porch	5.8m ²	0.6sq
Total	186.5m²	20.1sq

Listed details based on Sheffield facade floorplan (illustrated)

FLOORPLAN OPTIONS

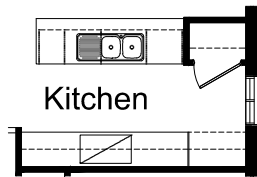
We personalise our floorplans. Talk to us about our huge range of ready-to-go design options or simply visit www.burbank.com.au/south-australia for more details.

*Copyright conditions. All photos and illustrations are representative only. Floor plans and specifications may be varied by Burbank without notice, the dimensions are diagrammatic only and a Building Contract with final drawings will display correct dimensions and detail. All designs are the property of Burbank and must not be used, reproduced, copied or varied, wholly or in part without written permission from an authorised Burbank representative. Copyright Burbank Australia (SA) Pty Ltd. ABN 96 165 533 406. BLD 266709.

Call 13 BURBANK
Visit burbank.com.au

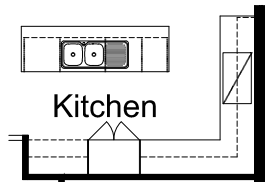
OPTION K1

Provide Kitchen upgrade with relocated Pantry.
Provide 1no. under bench oven with cooktop and retractable rangehood concealed within 900mm overhead cupboard,
1no. MW provision,
1no. DW provision,
1no. 800mm base cupboard,
1no. 450mm drawers,
2no. 300mm base cupboards,
2no. 700mm base cupboards,
2no. 300mm open shelf overhead cupboards,
2no. 700mm overhead cupboards,
1no. 950mm open shelf above refrigerator space,
Relocate Kitchen ASW1809 window 240mm towards front of house.



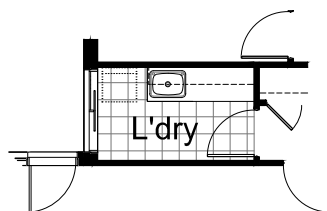
OPTION K2

Provide Kitchen 'L' shaped redesign with 800mm wide island benchtop,
1no. laminated MW provision with pot drawer below,
2no. 800mm base cupboards,
1no. laminated DW provision,
1no. 450mm drawers,
2no. 600mm pot drawers,
1no. 900mm underbench oven with cooktop and retractable rangehood concealed within 900mm overhead cupboard
1no. 1050mm blind carcass with 1no. 600mm door,
1no. 300mm overhead open shelf unit,
1no. 800mm overhead cupboard,
1no. 300mm overhead cupboard,
2no. 600mm overhead cupboards,
1no. 900mm overhead blind carcass with 2no. 300mm door,
1no. 900mm laminated tall pantry and laminated open shelf above refrigerator space with additional tiled splash back and bench top to suit.
Decrease Meals/Family length by 200mm and deleting 2no. ASW 1809 windows to Kitchen to suit.



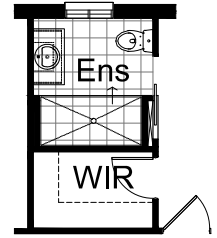
OPTION LD1

Provide Laundry upgrade with
2no. 900mm base cupboards,
2no. 900mm overhead cupboards and additional bench top and tiled splash back to suit.



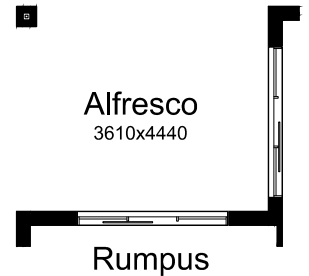
OPTION ENS1

Provide Ensuite upgrade with wall to wall tiled shower base, 720mm wide cavity sliding door in lieu of 800mm wide opening with bulkhead over and provide ASW 1209 window in lieu of ASW 1806 window.



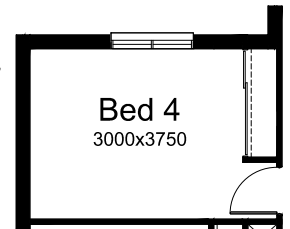
OPTION EP1

Provide Alfresco under dwelling roof line including earth floor and 1no. 350mm x 350mm brick pier.
Increase area by 16.02m².



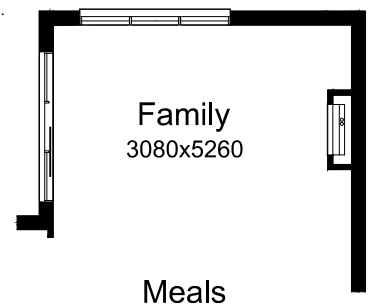
OPTION IP2

Make Rumpus into a Bed 4 by moving and making opening to suit an 820 door, add robe with sliding doors and shelf, replace sliding door with ASW 1215.



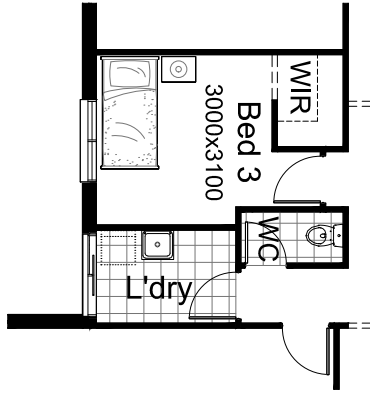
OPTION IP3

Provide Real Flame Inspire 900 gas fireplace, 400mm off floor level in a 1400mm x 420mm boxed out plaster wall with a 4 sided black fascia to Family room side wall.



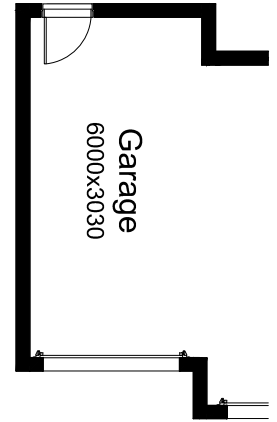
OPTION IP4

Provide relocated WC (opposite Garage access door), delete Linen and create a WIR to Bed 3. Laundry reduced by 300mm to suit.



OPTION G3

Provide triple car Garage including additional roller door to front. Increases area by 20.51m². Increases width by 3120mm.



OPTION G1

Provide extension to Garage to create additional Storage area. Increases area by 4.58m². Increases width by 850mm.



OPTION G2

Provide extension to Garage to create Workshop area including additional window to suit. Increases width by 2400mm. Increases area by 13.51m².

